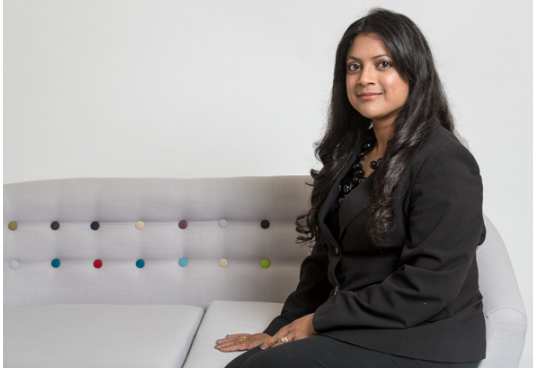


TAHMINA RAHMAN

Tahmina Rahman
Year of Call: 2001
tahmina.rahman@4bc.co.uk
020 7832 3200

Practice Areas:
Abduction & International
Movement
Adoption & Special
Guardianship
Care Proceedings
Child Arrangements
Court of Protection
Domestic Violence &
Injunctions
Financial

Expertise

Tahmina specialises in matrimonial finance, advising and representing in substantial asset and complex cases involving trusts, foreign assets, bankruptcy, ante-nuptial agreements, inherited wealth and TOLATA claims.

Tahmina is also regularly instructed in complicated public law cases (equally representing local authorities, parents or children) and private law children cases (including leave to remove from the jurisdiction cases). Her cases have involved representing parties where there have been babies/infants suffering fractures, serious inflicted injuries in 'witchcraft' or 'sorcery' cases, a child at significant risk from gangs and a case involving sibling sexual abuse.

Tahmina is direct access qualified and can be instructed [directly](#).

Education

University:
University College London, Law

Law School:
Inns of Court School of Law (2001)

Memberships

FLBA
Lincoln's Inn